

TCD/IP

Network-Managed Video System Controller

Carrying forward the LEIGHTRONIX tradition of providing full-featured products at an affordable price, the TCD/IP™ is the most powerful LEIGHTRONIX Event Controller ever. With network-based management, Web-based access, advanced PLUS-BUS™ control for 16 devices, standard PRO-BUS™ control for 64 devices, external routing switcher control, digital video messaging, and automatic schedule output (both Web and messaging), the TCD/IP is truly a powerhouse!



NETWORK ACCESS

What good is having the most powerful Event Controller ever if you can't manage it when and where you want to? The TCD/IP includes a 10/100 Ethernet port for connection directly to your local or wide-area network. Using standard TCP/IP protocols, the TCD/IP can be accessed and controlled at your desktop from across the room or your laptop from across the country! Providing Web-based control and full system management, the TCD/IP is available when you need it.

WEB-CONTROL INTERFACE

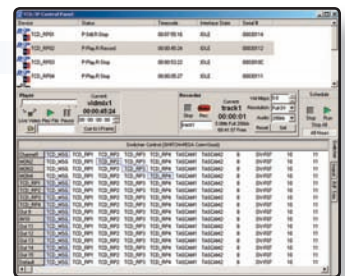
Forgot to switch up that graphic? Last minute change? Need to check status of your routing switcher? No problem with the TCD/IP and an Internet connection! Log in to your TCD/IP from anywhere using a Web browser to start a new schedule, control your switcher, trigger a macro, or pop up a slide. The switcher status and control function makes use of input/output aliases and device assignments. A special schedule viewer function allows the viewing of schedules based on individual outputs and channels from within the TCD/IP Web interface. The TCD/IP can also act as a server of schedule information through a link to your Web site!

WinTCD SOFTWARE

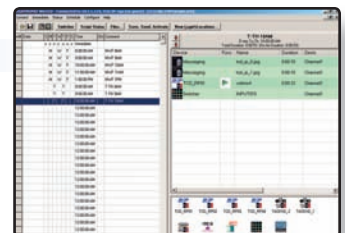
Each TCD/IP is shipped with WinTCD™, the "mega-manager" for your "mega-controller." WinTCD unleashes the power of the TCD/IP from your Windows desktop by providing immediate device control, status information, schedule creation and management, diagnostics, and more. Whether you are managing a single TCD/IP or a dozen, WinTCD provides you with the power and flexibility to take control of your automation universe. Call LEIGHTRONIX to get your demonstration copy of WinTCD, and learn how you can test drive WinTCD by connecting to a live TCD/IP over the Internet.

EVENT SCHEDULING

Set an event date and time, then drag resources and macros into your event. Click on the "Save, Send and Activate" button, and your TCD/IP is ready to go. Programming doesn't get much easier. Want more programming power? Click on the "Script" tab and create your own "power-user" schedule. With 4000 events, multi-day selection, and as many as 400 control commands per event, the TCD/IP has the power to handle even the most difficult automation requirements. Multiple channel systems are a snap, just assign



Control Panel



Scheduling

Affordable ♦ Versatile ♦ Reliable
Cable/Broadcast Automation

LEIGHTRONIX, INC.
CONTROL PRODUCTS

each channel tab a name and output. A special "All Hours" feature eliminates the need to re-program events for hourly playback. The TCD/IP event format provides almost limitless functionality while maintaining an easy-to-use interface.

DIGITAL VIDEO MESSAGING AND PROGRAM SCHEDULE DISPLAY

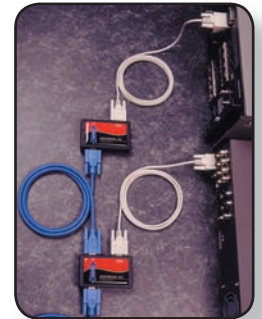
The age-old problem of synchronizing graphic messages with your automation schedule is over. Imagine being able to display your still images in harmony with program playback from servers, DVD players, and other sources. WinTCD provides all of the tools necessary to import and manage new slides, including the ability to indicate safe title and safe action; re-size, crop, and position images; and launch your favorite image editor from within WinTCD. Once the image is perfect, WinTCD will automatically send the images to the TCD/IP's memory for safekeeping. Scheduling automated slide display is as simple as selecting the image and dragging it into the event sequence. Add transitions to multiple slide sequences, all in step with your event schedule. Select the program schedule mode and the TCD/IP will automatically display an on-air program schedule derived from the active schedule.



Messaging Tools

PLUS-BUS DEVICE CONTROL

Today's sophisticated digital playback and recording devices need the power of the LEIGHTRONIX PLUS-BUS to keep things running smoothly. Big on performance, modestly priced, and simple to install, PLUS-BUS interfaces provide the intelligent link from the TCD/IP to today's and tomorrow's servers, MPEG players, and "smart" DVD devices. Bus powered, with looping bus connections, up to 16 PLUS-BUS interfaces can be used to control video servers, digital disc recorders, DVD players/recorders, multi-disc DVD players, videocassette recorders, robotic videocassette changers, or other PLUS-BUS compatible devices. Need to control something "special?" LEIGHTRONIX offers a generic RS-232 PLUS-BUS interface that is capable of transmitting serial data to practically anything RS-232 controllable. Contact us to see how the PLUS-BUS can help make your digital dreams come true.



PLUS-BUS

PRO-BUS DEVICE CONTROL

The LEIGHTRONIX PRO-BUS was designed for low-cost yet reliable device control. An industry standard, PRO-BUS interfaces are available for infrared, wired, parallel, and serial controlled devices that need basic control without status. The TCD/IP is capable of managing up to 64 PRO-BUS controlled devices using a simple looping connection scheme. PRO-BUS interfaces are available for control over a wide variety of DVD players/recorders and VCRs. Basic commands, such as PLAY, STOP, REWIND, and RECORD (where applicable), are available. With dozens of PRO-BUS models to choose from, LEIGHTRONIX offers the interface solutions you need at a reasonable price. Contact the LEIGHTRONIX dealer in your area, or visit www.leightronix.com for PRO-BUS compatibility information.



PRO-BUS

ROUTING SWITCHER CONTROL

Playback and recording device control is almost worthless without powerful routing switcher control, and the TCD/IP is one powerful routing switcher controller! Whether your needs are immediate remote control or timed-event switching, the TCD/IP provides full router control and status for matrices up to 250 inputs by 250 outputs. User-assignable input and output naming, automatic channel assignment, direct-connect interfacing, background status polling, and comprehensive diagnostics are just a sampling of the many powerful routing switcher control features of the TCD/IP.

GPI INPUTS/OUTPUTS

If you need to control the nearly “uncontrollable” device, or execute events based on an external trigger, the TCD/IP General Purpose Interface (GPI) inputs and outputs are a real problem solver. GPI inputs work hand-in-hand with programmed events to create complex control schemes that are dependent upon an external trigger. A list of actions can be programmed to occur when a GPI input change is sensed. Three GPI outputs provide programmable “contact closure” control. Each GPI output can be programmed to open, close, or pulse closed for a set duration.

LOGGING

An internal system log maintains an ongoing history of all scheduled, manual, and remote occurrences. The log can be accessed and downloaded from any computer running the client software. A new log file is automatically created monthly.



TCD/IP Rear Panel

SPECIFICATIONS

- ❖ Dimensions - 1.70”H X 19.00”W X 11.00”D
- ❖ Weight - 6 lbs.
- ❖ Network - TCP/IP, FTP, Telnet protocol, user-configurable IP address, subnet, gateway
- ❖ Display - 2 X 24 character vacuum fluorescent display
- ❖ Keyboard - Keypad with four push buttons allows password protected front panel status and configuration
- ❖ Internal Clock - Battery-backed time and date, laser-trimmed crystal oscillator for high accuracy
- ❖ Alarm Output - Two-pin removable terminal block, single pole low-voltage relay
- ❖ GPI Inputs - Three GPI inputs, two-pin removable terminal blocks, TTL 0/+5VDC logic, edge sensitive
- ❖ GPI Outputs - Three GPI outputs, two-pin removable terminal blocks, single pole low-voltage relay contacts
- ❖ PLUS-BUS - DB9F connector, LEIGHTRONIX proprietary high speed RS-485 serial device control bus
- ❖ PRO-BUS - Four six-position/four-conductor modular jacks, LEIGHTRONIX proprietary device interface control bus
- ❖ Messaging - One 15-pin VGA port, 800x600 graphics (scan converter required for composite NTSC output)
- ❖ RS-232 - Four RS-232 interface ports
- ❖ Network - Eight-position/eight-conductor modular jack, 10/100BASE-T Ethernet, auto sensing
- ❖ Power Input - Three-position IEC power input with removable power cord, fuse, and power switch
- ❖ Power Supply - Internal, 60 watt, accepts 90 to 264VAC @ 47 to 63Hz
- ❖ Certifications/Compliance - UL STD. 1950 3rd Edition, CAN/CSA STD. C22.2 NO. 950-95, FCC Part 15



FEATURES

Programmable Event Controller

- ❖ Multi-Event Programmable Database
- ❖ Stand-Alone Operation
- ❖ Internal High-Accuracy Clock
- ❖ Non-Volatile, Battery-Backed Event and System Data
- ❖ Comprehensive System Diagnostics
- ❖ System Log

Local and Remote PC Access

- ❖ Local and Remote Access via TCP/IP Network
- ❖ Integrated 10/100BASE-T Ethernet Port
- ❖ WinTCD Network Management Software Included
- ❖ HTML Web Server
 - Web-Based System Control
 - Linkable Web-Based Program Guide Display
 - Password-Protected Login

WinTCD Network Management Software

- ❖ Administrative Tools
- ❖ Drag and Drop Event Scheduling
- ❖ Direct Event Script Editor
- ❖ Digital Video Messaging Tools
- ❖ Online System Monitoring/Updating
- ❖ System Control Panel

Integrated Digital Video Messaging

- ❖ Import and Display Digital Video Slides
 - Imports Standard JPEG Images
 - Sizes and Configures Slides with User-Friendly Tools
 - Indicates Safe Title and Safe Action Areas
- ❖ Scheduled Slide Playback
 - Displays Slides in Sync with Program Playback
 - Changes Slides with Fast-Cut or Random Transitions
- ❖ Digital Video Program Guide Display
- ❖ Launch a User-Configurable Image Editor within WinTCD
- ❖ Direct VGA Output (External Scan Converter Required for Composite NTSC Video)

PLUS-BUS Device Control

- ❖ Advanced Control for 16 Devices
- ❖ Full-Function Control with Status
- ❖ Interfaces available in RS-422 and RS-232 Configurations
 - Video Servers/Digital Disc Recorders
 - Single and Multi-Disc DVD Players/Recorders
 - VCRs and Multi-Cassette Robotic Cassette Changers

PRO-BUS Machine Control

- ❖ Control for 64 DVD Players and/or VCRs
- ❖ Four-Function Control (PLAY, STOP, REWIND, and RECORD)
- ❖ Individual or Combined Addressing for Group Control
- ❖ Interface Types
 - Infrared (Adhesive Ring)
 - Wired (Mini-Plug and RCA-Plug)
 - Parallel (Multi-Pin)
 - Serial (RS-422)

Control for Select Routing Switcher Matrices

- ❖ Support for Matrices up to 250 Inputs by 250 Outputs
- ❖ Up to 8 Levels of All-Level Switching
- ❖ Input/Output Status
- ❖ User Defined Input/Output Aliases
- ❖ Integrates with LEIGHTRONIX PRO-16 and PRO-8 Event Controllers

GPI Inputs/Outputs (General Purpose Interface)

- ❖ Three GPI Inputs
 - Activation of Any System Device
 - GPI Triggered Switcher Control
 - Edge Sensitive
- ❖ Three Programmable GPI outputs
 - Single-Pole Relay Contacts
 - Open, Close, or Pulse

Five-Year Warranty

Options

- ❖ MVP-Voice Telephone Interface
- ❖ DTMF Decoder
- ❖ Non-Standard Routing Switcher Interface Cables
- ❖ External Time Reference Input
- ❖ Touch-Screen Interface

APPLICATIONS

Automated Program Broadcasting

Locally Originated Cable Television Channels

- ❖ Public Access
- ❖ Educational Access
- ❖ Government Access
- ❖ Leased Access

Private In-House Networks

- ❖ Hospitals
- ❖ Campus Movie Channels
- ❖ Hotel/Motel/Resort Channels
- ❖ Corporate Communications

Broadcast

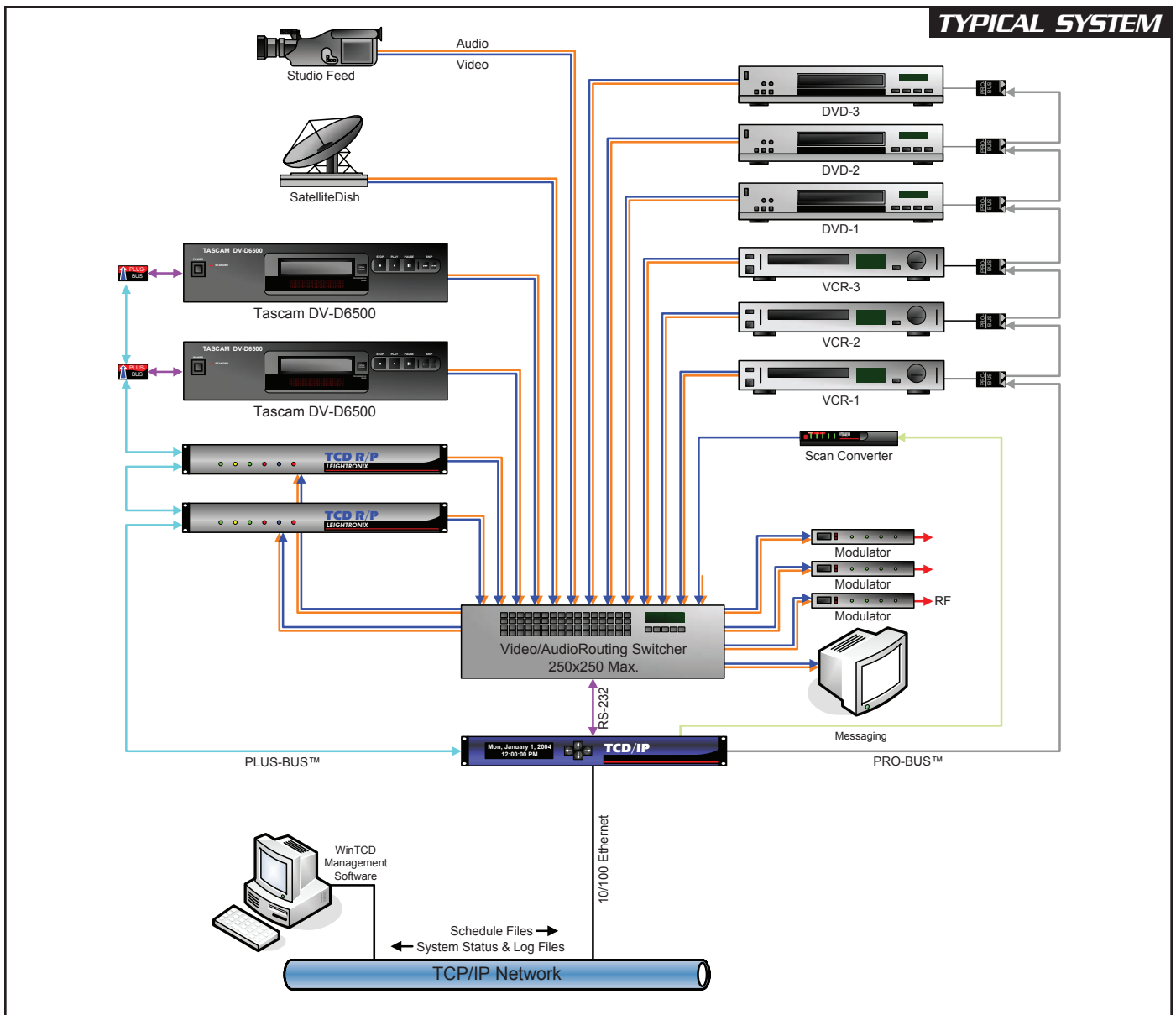
- ❖ LPTV
- ❖ MATV

Timed-Event Switching

- ❖ Syndex Switching
- ❖ Channel Wild-Card Switching
- ❖ Channel Sharing

Unattended Program Recording

- ❖ Satellite/Network Recording
- ❖ Playback Verification/Archiving



info@leightronix.com ♦ www.leightronix.com ♦ (800) 243-5589

2330 Jarco Drive ♦ Holt, MI 48842 ♦ Phone (517) 694-8000 ♦ Fax (517) 694-1600